

Hi Subscriber,

Hope you had a successful ending of the growing season! Please find below GeoPard news and updates. View in pdf.

Business Updates

Start	Grow	Expand	Enterprise
Get started to explore GeoPard on a couple of fields. Also suitable for viewing.	For average size farmers managing fields mostly by themselves.	Perfect for Ag consultants and service providers approximately 20k - 100k ac.	For teams that require Ag data analytics platform and infrastructure for their business.
\$300 /year Billed yearly \$100 savings >	\$2500 /year Billed yearly \$100 savings >	\$7500 /year Billed yearly \$100 savings >	Let's talk
Start now	Start now	Start now	Contact us
<ul style="list-style-type: none">30,000 creditsAll features enabledKnowledge base support	<ul style="list-style-type: none">500,000 creditsAll features enabledBasic email support	<ul style="list-style-type: none">3,000,000 creditsAll features enabledAPIProduct demoPriority email supportData onboarding assistance	<ul style="list-style-type: none">All features enabledAPIProduct demoPriority email supportData onboarding assistanceDedicated account managerInstant chat supportPrecisionAg consultancyIntegrationAutomation workflow recommendationsCustom features development
<small>\$100 for each additional 10,000 credits. Minimum additional order size: 10,000 credits.</small>	<small>\$100 for each additional 100,000 credits. Minimum additional order size: 100,000 credits.</small>	<small>\$100 for each additional 600,000 credits. Minimum additional order size: 600,000 credits.</small>	

Credits-based affordable pricing

GeoPard allows its clients to have access to all the GeoPard features without paying expensive per acre/hectare subscription in advance. Pay only for what you use.

[Check the pricing page](#)

Partner Program

GeoPard team is excited to announce the launch of the Community Partner Program. You promote the GeoPard across your network and get extra income.

[Read more and become a partner](#)

How it works



New Features and Modules



Mobile apps for IOS and Android

Scouting (notes, comments, photos), Offline mode, Soil sampling module, access to topography, satellite, yield, as-applied/as-planted, soil scanners data are available.

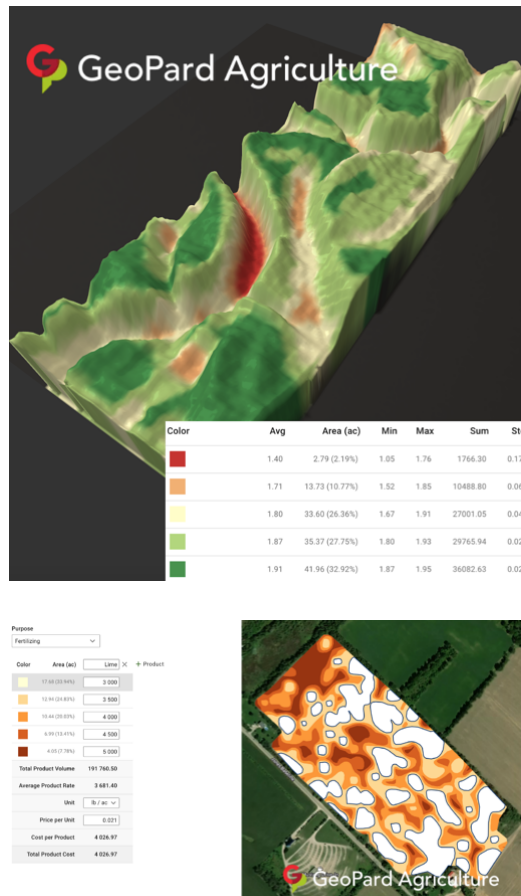
The apps work on mobile and tablet devices.

Install [IOS](#) or [Android](#) app

3D maps

Visualize any data layer (LIDAR topography, yield, soil, satellite imagery) in 3d directly in the browser to understand the main factors which influence yield

[More \(with videos\)](#)



Understanding SoilOptix® data through GeoPard

Modern precision agriculture is the synergy of agronomy, technology, software, hardware, all of which optimize sustainable and economic decision making. We are happy to work with SoilOptix®, and analyze soil data from the soil ground scanners to provide realtime value to agronomists.

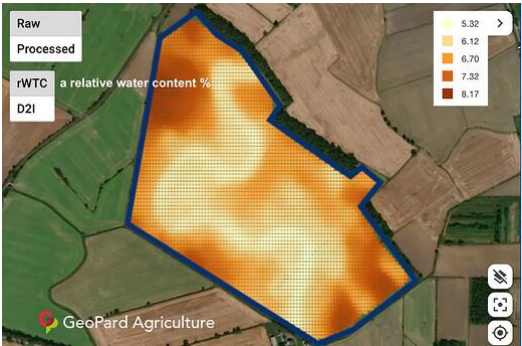
[Read more](#)

TopSoilMapper scanners data analysis

After importing a data captured by TopSoilMapper, you can see

- a relative water content
- a depth to interface with information about compaction
- electrical conductivity on 4 cumulative depth

[Read more](#)



Soil Brightness Index

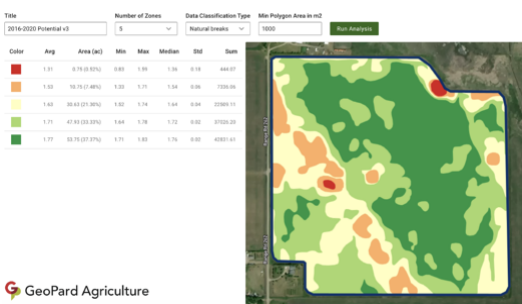
The **Soil Brightness Index (SBI)** is a valuable tool that can be used to do an express analysis of your soils, and is calculated by GeoPard based on satellite imagery.

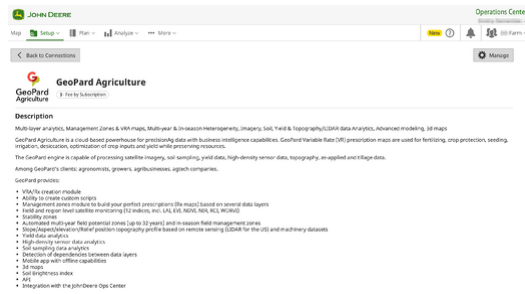
[Read more](#)

Advanced Zones stats

Advanced statistics are calculated per zone, containing the attributes: minimum and maximum values of the vegetation index (or other attributes), median, average, standard deviation, and the sum of all the values in the zone.

[Read more](#)





Integration with JohnDeere Ops center

MyJohnDeere customers can now seamlessly upload their data into the GeoPard system, where they can do an advanced data analysis, compare information to other data sets, and create detailed Variable Rate Application (VRA) maps for seeding, fertilizing and spraying.

[Read on PrecisionAg.com](https://precisionag.com)

Manually drawn zones

Create management zones using tools to manually draw polygons, multipolygons, strips, etc. Use any of satellite, topography, yield, soil data layers as a background map



Smart Scouting module

The Smart Sampling Module is the automation of the process of finding the best spots for scouting.

Customer's feedback and stories

- Use-case: [Realize 5-10% more yield in potatoes](#) from Nicole Bartelds, Director and Smart farming advisor at Databoerin (Netherlands)
- *"Data visualization leads to the creation of ideas and analytics helps us to solve problems. GeoPard's platform not only helps us visualize data but also gives us the tools to analyze data so we can create solutions and write prescriptions agronomists and farmers can act on"* - Steve Larocque, Beyond Agronomy Owner & FarmVU President (Canada)
- *"Using Geopard has streamlined key parts of our workflow. In seasons where time is money, we can rely on the team at Geopard to get it done."* - Brendon Friesen - Operation & technology manager at PointForward (Canada)
- *"Geopard is a great tool for us to build management zones with. When we don't have access to multiple years worth of yield data for a grower, we can utilize GeoPard and the 20+ years of satellite imagery it gives us to build our management zones."* - Isaac Hickerson Data Manager at Hutson Inc. (Ohio, USA)

Other product updates

- The product cost calculator allows you to enter product cost price, and GeoPard will calculate the cost of ag inputs on the field and even zone level.
- Soil sampling cost calculator shows to you the potential price of soil sampling on per sample or per acre/hectare approach
- Editing of field boundaries while viewing as-applied, yield, or satellite imagery helps you to create accurately updated field boundaries
- As-applied and As-planted data import, visualization, and analysis is available (we retrieve this data from MyJD Ops Center as well)
- Importing of Management Zones from other systems let you manage zones from any other precisionAg system in GeoPard
- ISOXML/ISOBUS data support
- Cloning of Zones maps helps you to re-create Zones quickly, even with a [multi-year](#) and [multi-layer](#) approach
- The Organizations module helps you to have multi-user accounts and restrict access to particular farms (useful for big groups of agronomists). You can add colleagues, clients, and partners, work collaboratively in GeoPard

- More than 200 smaller bugs and improvements were done on the web & mobile apps

Previous newsletters (pdf):

- [Mar 2021](#)
- [October 2020](#)
- [June 2020](#)
- [May 2020](#)
- [April 2020](#)
- [March 2020](#)

Thank you for being with us,
GeoPard Team



GeoPard Agriculture, Neusser str. 472, Cologne, NRW 50733, Germany, +49176-36322391
[Unsubscribe](#)

Send free email today
HubSpot