

Hi there,

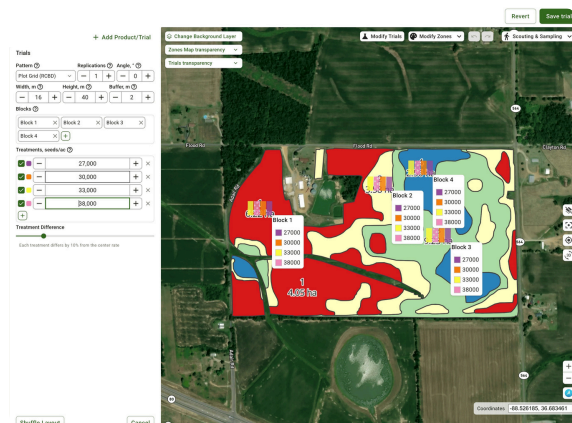
The latest GeoPard update is live, bringing new tools for Fields benchmarking, Trials design, Synthetic Yield maps and faster agronomic workflows. [Release notes](#).



## Multi-Farm View & Benchmarking

Compare and sort fields, farms by any attribute (yield, soil, imagery, topography). Prioritise your operations smartly -> Batch create prescriptions.

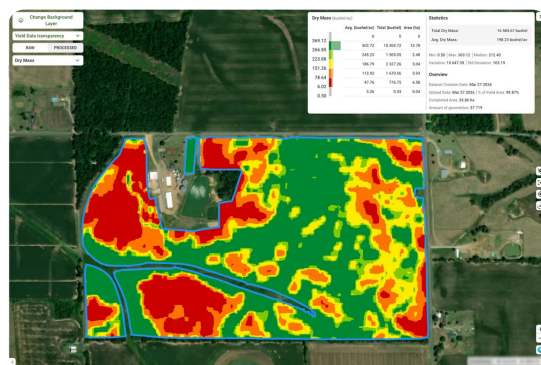
[Read more](#)



## On-Farm Trials Design

Unlike trial tools that only store treatments in a table or CSV, GeoPard keeps trial layouts directly in a geospatial field system. Supported:

- Plot Grid (RCBD)
- Zone Strip Field
- Strip
- Checkerboard
- Split Plot Design

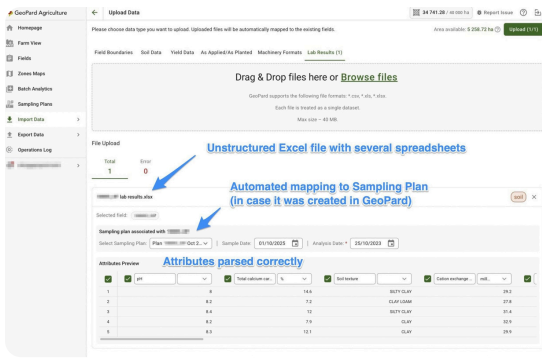


## Generate Synthetic Yield Maps

You can now create a **yield map without a yield monitor** - useful when you only know the total or average harvest result for a field.

Options:

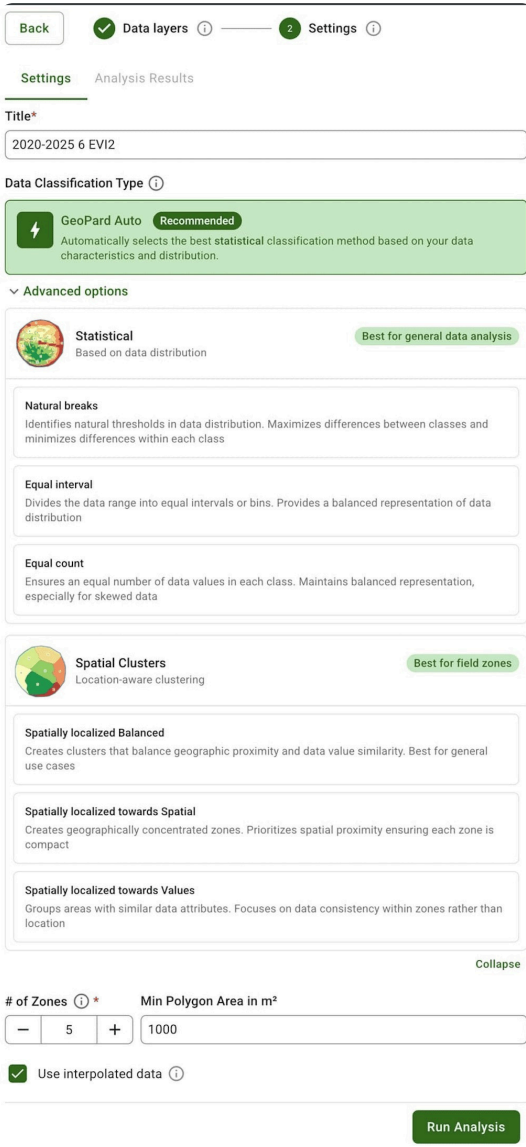
- Based on total/average yield
- Based on partial yield dataset



# Soil Lab Files Import in CVS/Excel formats + Batch management

Import soil lab files more smoothly and handle multiple datasets in batch with less manual work.

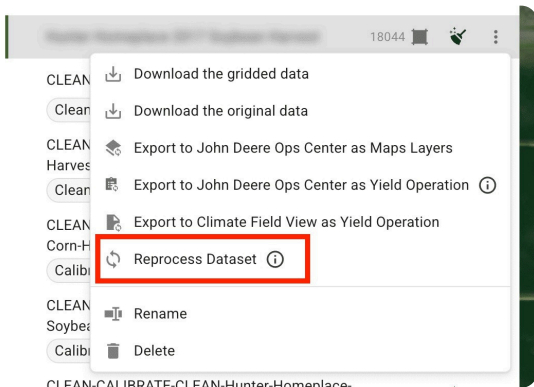
[Read more](#)



# Zones Auto-Classification option

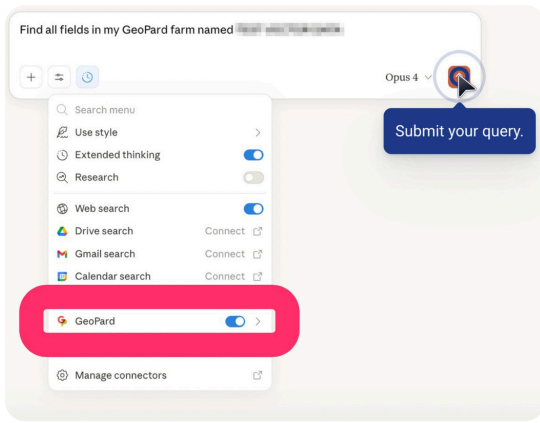
Now GeoPard can automatically decide based on data layers selected and data distribution/anomalies to decide which type of classification to execute.

[Check details](#)



# Reprocess Dataset

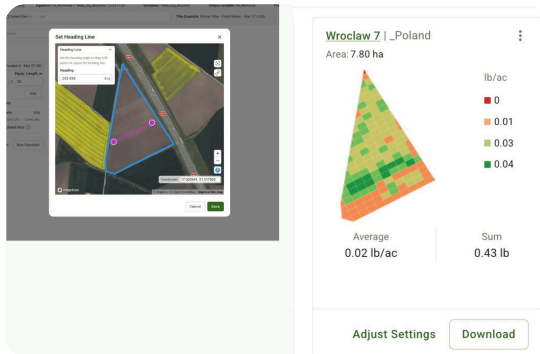
Reprocess datasets directly when needed (e.g. boundary changed), making it easier to update results without extra setup.



## MCP Server for your AI tools

Connect GeoPard more easily with external AI tools, assistants, and automated workflows. Use-case: Clean yield datasets in with conversational commands.

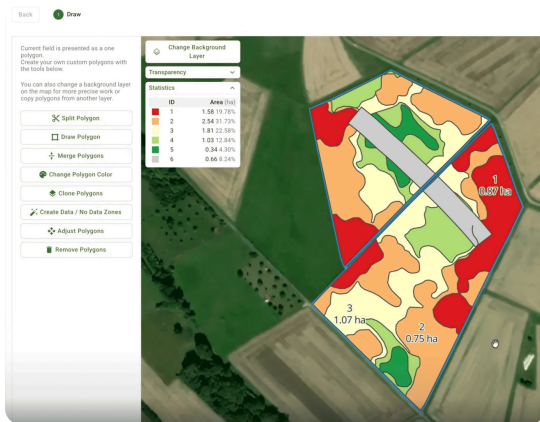
[Learn more about GeoPard MCP.](#)



## Heading Lines in Equation maps

Each field card on the **Batch**

**Equation Maps creation** page, now has an **"Heading"** control that opens a map popup. Inside, you can set the **pixel heading** for that specific field using the same tools available in single-field mode.



## Mask-logic zones based on as-applied/as-planted

Now GeoPard can automatically decide based on data layers selected and data distribution/anomalies to decide which type of classification to execute.

**Clean Yield Data**
✕

Select the cleaning type and options and click Proceed.

**Cleaning Type**

GeoPard
  **USDA Protocol**
 Conditional

\* The USDA (United States Department of Agriculture) cleaning protocol for yield

**Crop Type\***

Select the crop type for proper calibration.

Select Select

---

These filters set yield thresholds, data above Max and below Min will be deleted.

Yield*	Min	Max
Yld_Mass_D	289.416	96753.33
	Min value: 289.416 Max value: 96 753.33	Min value: 289.416 Max value: 96 753.33

**Flow Delay (seconds)**

Corrects for flow sensor delay time.

− 0 +

**Yield Unit**

Select the unit for proper calibration.

Select

---

Filters data below minimum moisture threshold.

**Moisture**

Moisture\_
0

Min value: 0  
Max value: 24.28

**Moisture Delay (seconds)**

Corrects for moisture sensor delay time.

− 0 +

---

**Pass Delays**

Removes data at the beginning and end of each pass to eliminate ramp-up/down artifacts.

**Start Pass Delay (seconds)**

− 0 +

**End Pass Delay (seconds)**

− 0 +

---

This filter removes data collected at velocities outside the specified range.

**Velocity**

Speed\_mph\_
0.073
6.121

Min value: 0.073  
Max value: 6.121

---

**Statistical Filters**

**Standard Deviation Number**

Removes yield data that are more than the specified number of standard deviations from the field mean.

3

**Overlap Removal Tolerance**

Removes overlapping data points within the specified tolerance distance.

− 0.5 +

---

**Column Mappings**

Map the columns for swath width and distance calculations.

**Swath Width Column**

Swth\_Width\_

**Distance Column**

Distance\_f

Back
Run

# USDA Yield Cleaning protocol improvements

A new cleaning protocol aligned with USDA guidelines has been added to Clean/Calibrate. It provides a more structured setup for yield cleaning (with required and optional parameters) so teams can apply consistent rules across fields, operators, and seasons - reducing “trial-and-error” and improving repeatability.

**March 2026  
release notes**

**February 2026  
release notes**

**GeoPard ships updates every week**, so you can always check the changelog for everything new, improved, and fixed.

Thank you,  
The GeoPard team